

# SEA TECH

## Remediation Partners



SeaTech Remediation Partners (SRP) is a joint venture (JV) between Sealaska Remediation Solutions, LLC (SRS) and Tetra Tech, Inc. (Tetra Tech). STARS is focused on providing mission critical services for all aspects of Environmental Services to help our U.S. Federal clients respond to today's unique environmental challenges in innovative ways.

SRP is a small, Alaska Native Corporation (ANC)-owned joint venture and is immediately available for all qualified competitive contract awards.

Primary NAICS	UEI	CAGE
562910	CWTZCL8TH4Z5	9LP39

### CONTACT INFORMATION:

Jeff Carnahan, LPG  
 Senior Director, Environmental Programs  
[jeff.carnahan@sealaska.com](mailto:jeff.carnahan@sealaska.com)  
 317.374.0746

### CLIENTS:



**Tetra Tech** is a leading provider of consulting, engineering, project management, construction management, and technical services. The Company supports government and commercial clients by providing innovative solutions to complex problems focused on water, environment, energy, infrastructure, and natural resources.

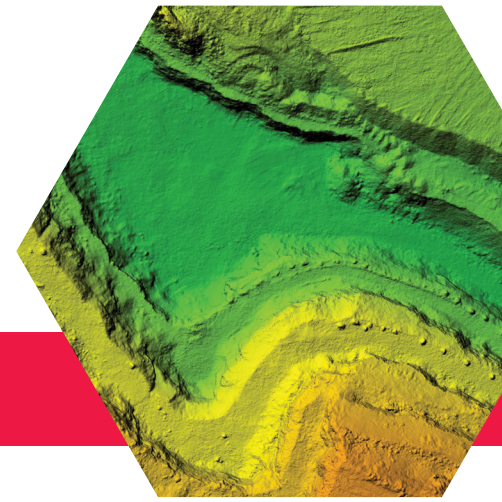
**Sealaska Remediation Solutions (SRS)** is a full-service engineering and environmental consulting firm. SRS is a subsidiary of Sealaska Corporation, an ANC, and is a participant in the SBA 8(a) Business Development Program.



SEALASKA  
 REMEDIATION  
 SOLUTIONS  
 A Woocheen Company



Sealaska and Tetra Tech JVs perform seamlessly as a fully integrated team, leveraging our joint scientific expertise, existing policies and procedures for Project Management, Human Resources, Quality Assurance and Quality Control, Acquisition Management, Financial Reporting, and Health and Safety, which directly benefits our federal clients. This all translates into high quality, cost-effective, low risk project execution.



## Services Offered

### INVESTIGATION AND REMEDIATION OF CONTAMINATED SITES

- Extent of contamination characterization
- PFAS and contaminants of emerging concern
- Groundwater and surface water
- Soil & sediment remediation
- Groundwater remediation
- Vapor intrusion investigation and mitigation
- Low-level radiological & munitions remediation
- Remediation system operation and maintenance
- Regulatory compliance and closure
- Long-term monitoring and inspections

### SCIENTIFIC & TECHNICAL SUPPORT

- Geologic modeling
- High resolution conceptual site models
- Human health and ecological risk assessment
- Sediment and ecological impacts
- Toxicity studies
- Data analysis and environmental modeling
- Human health and ecological risk assessment
- Feasibility studies
- AFFF treatment, replacement, and disposal
- Procurement
- Data management

### ENVIRONMENTAL PLANNING, PERMITTING, AND COMPLIANCE

- National Environmental Policy Act, Endangered Species Act, and state environmental policy compliance
- Resource Conservation and Recovery Act
- Comprehensive Environmental Response, Compensation, and Liability Act
- Toxic Substances Control Act, Clean Air Act, Clean Water Act, Solid Waste Disposal Act
- Wetland Delineation, Mitigation, and Restoration Plans

### FRESHWATER & DRINKING WATER RESOURCES

- Watershed/Basin analysis
- Water rights assessment and compliance
- Drinking water sampling and point of use protection

### GEOGRAPHIC INFORMATION SYSTEM (GIS) AND MAPPING

