



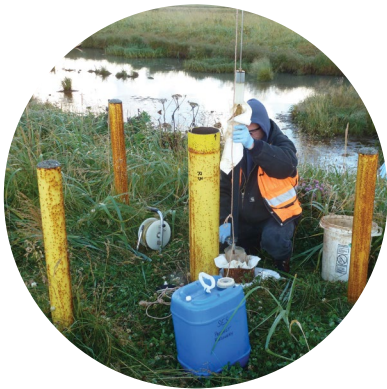
**SEALASKA
REMEDICATION
SOLUTIONS**
A Woocheen Company

Protecting and Restoring Our Water Resources and Ecosystems

INVESTIGATION & REMEDIATION OF CONTAMINATED SITES • SCIENTIFIC & TECHNICAL SUPPORT

GEOGRAPHIC INFORMATION SYSTEM (GIS) & MAPPING • ENVIRONMENTAL PLANNING, PERMITTING, & COMPLIANCE

LEGAL, COMMERCIAL & DEVELOPMENT • WATER RESOURCES



SRS offers the following environmental services:

Sealaska Remediation Solutions (SRS) is a full-service provider of environmental assessment, consulting, investigation, and remediation services. Our mission is to preserve and restore the health of our water and environmental resources so that both people and the planet thrive.

SRS is a subsidiary of Woocheen, Sealaska Corporation's ocean health business platform. Sealaska is an Alaska Native Corporation founded in 1972 with more than 23,000 tribal shareholders. Our extensive network of employees and active subsidiaries offers our clients a well-established corporate structure with a reputation built on core native values and a dedication to excellence.

INVESTIGATION AND REMEDIATION OF CONTAMINATED SITES

- Extent of contamination characterization
- PFAS and contaminants of emerging concern
- Soil, Groundwater, and Sediment remediation
- Vapor intrusion investigation and mitigation
- Remediation system operation and maintenance
- Long-term monitoring and inspections

SCIENTIFIC & TECHNICAL SUPPORT

- High resolution conceptual site models
- Sediment and ecological impacts
- Toxicity studies
- Feasibility studies
- Procurement

- Data management

GEOGRAPHIC INFORMATION SYSTEM (GIS) AND MAPPING

- Geodatabase design
- GIS data management
- Geostatistical and Spatial analysis
- GIS and mapping
- Application development
- 3D and spatial modeling

ENVIRONMENTAL PLANNING, PERMITTING, & COMPLIANCE

- National Environmental Policy Act, Endangered Species Act, and state environmental policy compliance
- Resource Conservation and Recovery Act
- Comprehensive Environmental Response, Compensation, and Liability Act

- Toxic Substances Control Act, Clean Air Act, Clean Water Act, Solid Waste Disposal Act

LEGAL, COMMERCIAL, AND DEVELOPMENT

- Litigation support
- Mergers & Acquisition environmental due diligence
- Remediation Cost preparation
- Phase I/Phase II Environmental Site Assessments

WATER RESOURCES

- Watershed/Basin analysis
- Water rights assessment and compliance
- NPDES Permitting and monitoring
- Total Maximum Daily Load assessment and planning



Our Vision



No species — on land or in the water — is endangered by human development and activity.



Everyone — anywhere in the world — has readily accessible, clean drinking water

Experienced Professionals:

SRS interdisciplinary teams of scientists, engineers, and planners provide technically innovative and cost effective solutions to environmental and infrastructure challenges facing municipalities, utilities, government agencies, Tribes and industry. Our goal is to provide the optimal balance of environmental, operational and economic value that is unique to each project.

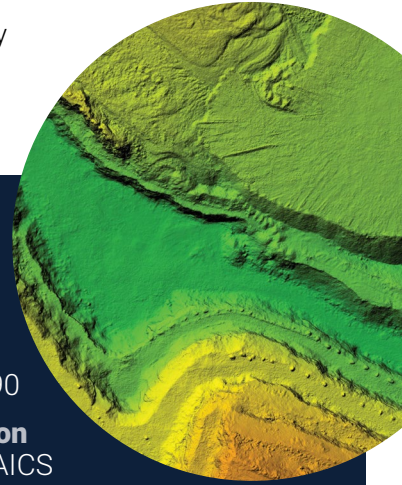
Representative Clients:

- US Navy (NAVFAC)
- US Army Corp of Engineers
- US National Park Service
- US Department of Energy (NNSA)
- Port of Seattle
- Port of Brownsville
- City of Poulsbo
- City of Bainbridge Island
- Kitsap County
- Other Large National Engineering and Construction Companies



Woocheen's 8(a) and small business subsidiaries offer a full spectrum of services and solutions including:

- Construction
- Data Management and Analytics
- Systems Engineering, Technology Integration and Development
- International Logistics



Sealaska Technical: CAGE 6UKQ8, NAICS 541620

Sealaska Constructors: CAGE 5PWZ7, NAICS 237990

Sealaska Secure Construction Solutions: CAGE 8BHC7; NAICS 236210

Sealaska Construction: CAGE 89P06; NAICS 236220

Managed Business Solutions: CAGE 3RCC5NAICS 541512

Cognitell: CAGE 7G7K8; NAICS 541511

Company Details:

NAICS Codes: 562910, 541620, 541330, 562211, 562998

CAGE 7YR71

UEI KJFPJM86BPS4

Contact Us:

Jeff Carnahan, LPG

Senior Director
Environmental Programs

317.374.0746

jeff.carnahan@sealaska.com

Ken Israel, PMP

Environmental Program
Manager

669.242.9413

ken.israel@sealaska.com



woocheen.com



**SEALASKA
REMEDICATION
SOLUTIONS**
A Woocheen Company

Office Locations
Juneau, AK
Seattle, WA

Richland, WA
San Francisco, CA
Los Angeles, CA

Colorado Springs, CO
Indianapolis, IN